

CONSUMER QUOTE WORKSHEET

ALL PRICES ARE MSRP

NEBULA™ \$8212.25 MSRP

White/Blue

1. CHOOSE YOUR ANCHORING SYSTEM

- | | |
|--|-----------|
| <input type="checkbox"/> S1140 Anchor Kit - Concrete Decks | \$161.78 |
| <input type="checkbox"/> S1144 Anchor Kit - Wood Decks | \$1053.95 |
| <input type="checkbox"/> S1142 Anchor Kit - Paver Decks | \$494.34 |
| <input type="checkbox"/> S1146 Anchor Kit - Jig Tool | \$165.85 |



2. ACCESSORIZE YOUR LIFT

- | | |
|---|-----------|
| <input type="checkbox"/> S1152 Chest Strap | \$39.59 |
| <input type="checkbox"/> S1228 Hard Seat Option | \$1229.43 |
| <input type="checkbox"/> S1144 Power Rotate Option for Nebula | \$1492.65 |



3. PROTECT YOUR INVESTMENT

- | | | |
|---|--|----------|
| <input type="checkbox"/> S1126 Blue Cover | | \$544.63 |
| <input type="checkbox"/> S1126 Tan Cover | | |
| <input type="checkbox"/> S1126 Grey Cover | | |



APPLICATIONS

Above-ground pools and spas clearances from 16" H to 60+" H (152 cm)

FEATURES

- 400 lb (181 kg) weight capacity
- 360 degree rotation Adjustable seat height
- Stainless steel construction with powder coat finish
- Limited five (5) year warranty
Includes 24v rechargeable battery and charger Ships common carrier, some assembly required

Lift	\$	_____
Jig Tool	\$	_____
Anchor Option	\$	_____
Accessories 1	\$	_____
Accessories 2	\$	_____
Accessories 3	\$	_____
Cover	\$	_____
Freight	\$	_____
Delivery & Installation	\$	_____
TOTAL	\$	_____

CONSUMER QUOTE WORKSHEET

ALL PRICES ARE MSRP

NEPTUNE™

\$8426.25 MSRP

1. CHOOSE YOUR NEPTUNE LIFT COLOR

- ☐ Neptune Lift - White/Blue
- ☐ Neptune Lift - White/Tan
- ☐ Neptune Lift - White/Grey
- ☐ Neptune Lift - White/White



2. CHOOSE YOUR ANCHORING SYSTEM

- ☐ S1140 Anchor Kit - Concrete Decks \$161.78
- ☐ S1144 Anchor Kit - Wood Decks \$1053.95
- ☐ S1142 Anchor Kit - Paver Decks \$494.34
- ☐ S1146 Anchor Kit - Jig Tool \$165.85

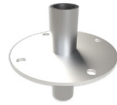


SS1144 Wood

SS1142 Paver



SS1140 Concrete



S1146 Jig

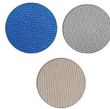
3. ACCESSORIZE YOUR LIFT

- ☐ S1152 Chest Strap \$39.59
- ☐ S1150 Headrest Assembly \$394.83
- ☐ S1154 Cycle Assembly \$619.53



4. PROTECT YOUR INVESTMENT

- ☐ S1156 Blue Cover
- ☐ S1156 Tan Cover
- ☐ S1156 Grey Cover



\$544.63



APPLICATIONS

Above-ground pools and spas

Clearances from 16" H to 68" H (172 cm)

FEATURES

- ADA Compliant & UL Safety Certified
- 400 lb (181 kg) weight capacity
- 360 degree rotation Adjustable seat height
- Stainless steel construction with powder coat finish Limited five (5) year warranty
- Includes 24v rechargeable battery and charger Ships common carrier, some assembly required Made in USA



Lift	\$	_____
Jig Tool	\$	_____
Anchor Option	\$	_____
Accessories 1	\$	_____
Accessories 2	\$	_____
Accessories 3	\$	_____
Cover	\$	_____
Freight	\$	_____
Delivery & Installation	\$	_____
TOTAL	\$	_____